

□

*3rd High Level Seminar on
Environmentally Sustainable Cities*

Siem Reap, Cambodia

Adaptation for Cities:

Urban climate resilience of Thai cities

Thailand Environment Institute
7 March 2012



สถาบันสิ่งแวดล้อมไทย
Thailand Environment Institute

Urban Climate Resilience Concepts



Urban = 'City' = Nakorn Municipality

With urban development, population growth

Urban = Nakorn + smaller municipalities
+ sub-district administrations

Climate resilience

- Mitigation and adaptation
- Long-term capacity to deal with change and continue to develop
- Shared learning of multi-stakeholders

Building resilience to climate change in urban context

- Development of long-term strategies addressing uncertainties
- Shared learning / lessons learned

But most cities face urgent / immediate issues (urban challenges + natural disasters)



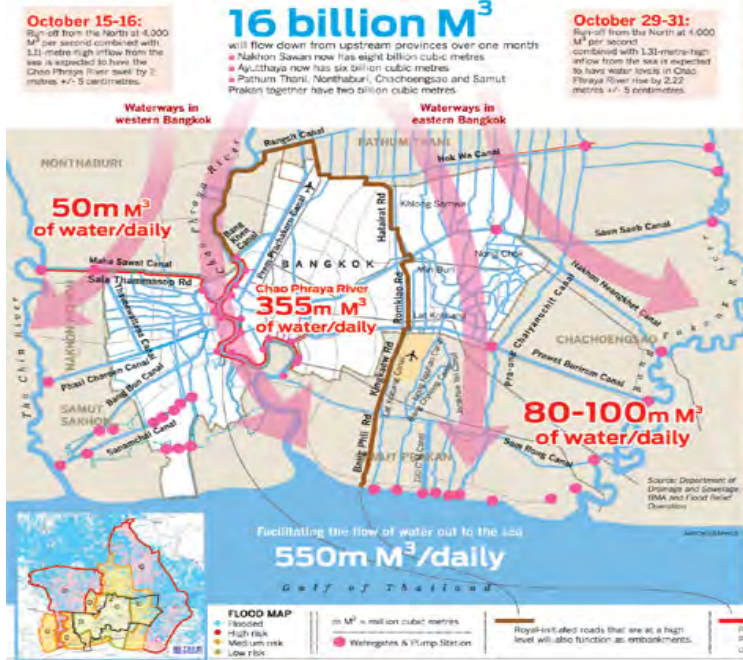
Thai cities and flood disasters

2011

- Bangkok
- Northern and Central provinces
- Direct and indirect impacts
- High damage costs



WHAT CAN BE EXPECTED



Every crisis produces optimists and pessimists. Amid the countdown to Bangkok including schools the likely million of The 20 unaccustomed officials concerned. Severe eventual sleep for the city chief.

THE BE CONCERN:
 • Levels have actual reserve
 • Unlike sewer
 • Sewer
 • These
 • For
 • For
 • The
 • The
 • The
 • The
 • The

THE BE SCARED:
 • Flood
 • Hazard
 • Hazard
 • Hazard
 • Hazard

Source: The Nation



Thai cities and flood disasters



2010

- Hat Yai (also 2000)
- Southern provinces
- Northern provinces





Key issues

- Access to information
- Awareness
- Participation
- Coordination
- Early warning system
- Preparedness
- Technical / scientific data
- Local knowledge



Challenges

- Rapid urbanisation
- Urban land use change
- Economic growth and development
- Natural resource demands
- Climate risks
- Vulnerable / marginalised community groups

Building resilience practices

Urban system

Thai cities

- Unplanned urbanisation, urban development, land use change contribute to climate risks

Vulnerability

Climate Change

- Governance issues



Building resilience practices

- Shared learning dialogues
- Multi-stakeholder process
- Participation process
- Vulnerable / Marginalised community groups
- Vulnerability Assessment
- Identification of priorities and needs
- Linking knowledge and practice



▫

Building resilience practices

- Multi-stakeholder process
- Hat Yai website for public flood monitoring
- Coordination centre, independent of municipality
- Participation of communities to plan and design flood emergency responses
- Intervention linking urban land use, flood management and climate change



ภาพจากกล้อง IP Camera สำหรับสอดส่องระดับน้ำในพื้นที่ลุ่มน้ำอุบลเกา

ม่วงค้อง



21 ก.พ. 2555 11:15:01 น.
ระดับน้ำ

บางศาลา



23 ก.พ. 2555 15:00:12 น.
ระดับน้ำ

คลอง ร.1



1 มี.ค. 2555 12:35:26 น.
ระดับน้ำ

จันทร์วิโรจน์



23 ก.พ. 2555 15:05:08 น.
ระดับน้ำ

ที่ว่าการอำเภอหาดใหญ่



1 มี.ค. 2555 11:40:10 น.
ระดับน้ำ

ต้นคลอง ร.6



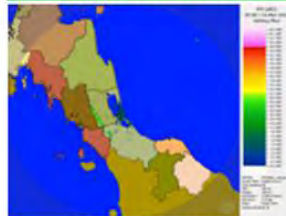
1 มี.ค. 2555 12:35:19 น.
ระดับน้ำ

แก้มลิงคลองเรียน

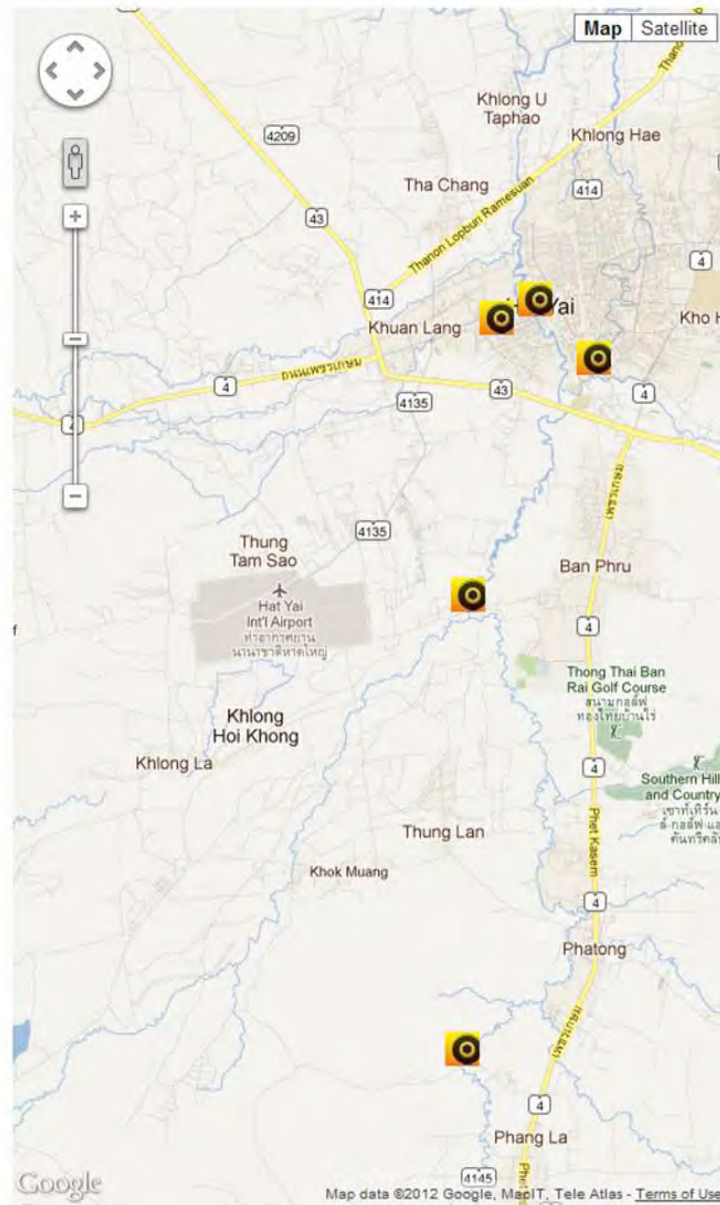


1 มี.ค. 2555 12:35:21 น.
ระดับน้ำ

สถานีเรดาร์สทิงพระ



1 มี.ค. 2555 12:30:02 น.
ที่มา



Map data ©2012 Google, MapIT, Tele Atlas - Terms of Use

Urban climate resilience framework (URF)

